

ULTRAVISION DIGITAL

One giant advancement towards your home entertainment experience

The evolution of Digital Video Disc (DVD) has merged the analog age of televisions with the digital age of computers. The coming of the digital age has brought on many benefits in the quality and features of home entertainment equipment. DVD maximizes your home entertainment experience by providing an exceptionally realistic picture, and because it's digital, you can watch the same movie over and over without any loss in picture quality. Unlike conventional VCRs, DVD offers several different screen formats and surround sound modes, multi-language audio and closed caption modes, random access search and play capabilities, and there's no need to rewind the movie. DVD may be one small addition to your home theater, but it's one giant advancement towards your home entertainment experience!



Hitachi's DVD offers several different screen formats and surround sound modes.

An overwhelming presence with the feel and excitement of a live performance

Dolby Digital (AC-3) 5.1 Channel Decoder - Delivers remarkable audio performance with realistic, high fidelity (HiFi) reproduction of Dolby Digital® original recordings, recreating the ambiance of a movie theater sound system.

Virtual Surround (Spatializer® N-2-2™) System - This is a virtual surround sound system that simulates rear speakers, using only two front speakers, by encoding five audio channels of information into two channels using Spatializer technology.

Digital Theater System (DTS) - DTS is a 3D sound system that is widely used in movie theaters for recording sound while employing a high degree of signal compression. The DV-P250U digital sound output is DTS compatible, making it capable of reproducing the full dynamics of original DTS sound providing truly exceptional audio.

96kHz/24-bit Audio Digital-to-Analog Converter (DAC) - Hitachi's powerful 24-bit DAC can process up to 16 million increments of audio information, ensuring more natural sound by accurately predicting and reproducing original sound waves over 40kHz.

Breath-taking beauty that's nothing short of sensational

Component Video Output - High-performance component video output eliminates the cross-talk interference between video signals. It separates the outputs into three video signal components: Brightness (Y), and blue/red Color Differences (Pb and Pr). This ensures a clear, sharp picture with accurate, true-color reproduction resulting in impressive picture quality.

10-bit/27MHz Video DAC - Hitachi up-converts the decoded 8-bit/13.5MHz MPEG signal into a 10-bit/27MHz signal prior to processing. This prevents playback errors and ensures maximum accuracy while providing realistic, high-quality performance with 500 lines of resolution.

Dual Laser/Dual Lens - DVD discs and CD discs each use its own optical reading system. Hitachi's Dual Laser/Dual Lens pickup features two independent optical systems that are optimized to read either DVDs or CDs with less optical loss than a single laser pickup system.

Super H Main Board - Hitachi's exclusive leading edge SuperH 32-bit RISC Processor Engine is the super-smart CPU behind this remarkable DVD Player. This powerful processor is capable of handling high-speed data transfers, enabling high precision Video and Audio playback.

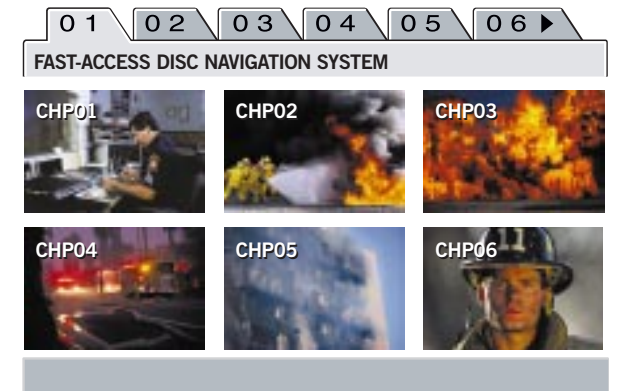
NTSC/PAL Playback Capability - Allows you to view a wide range of discs from many countries. It is capable of playing NTSC and PAL-system DVDs and Video CDs (using your PAL-Compatible TV set). (For DVD playback, matching Regional Codes are required for the disc and player, or an "All" code for the disc.)



Get the most from DVD with Hitachi's Exclusive Features

Multiple Playback Modes - Allows you to select between Repeat, Random, or Sequenced playback. Repeat playback allows you to replay the disc, title, chapter, track or a designated section. Random playback mixes the sequence of audio tracks or video titles. Sequenced playback allows you to program the DV-P250U to playback titles, chapters, or tracks in any order you like.

Fast-Access Disc Navigation System - Hitachi's exclusive Disc Navigation feature reads all chapters on the disc and displays a still image of the first scene from each chapter. Select the image and it will start playing back immediately. This even works on DVDs and Video CDs that don't have a menu screen. Also included are Title, Chapter, Track, and Time direct search functions.



Jog / Shuttle Variable Speed Playback

The DV-P250U has 5 Reverse speeds, 2 Slow speeds, and 4 Quick Play speeds as well as Normal and Pause modes, providing you with total control of your viewing needs. You can use the JOG dial on deck, or the SPEED [+] and [-] buttons on the remote.

Last Play Function - This allows you to pick up where you left off, just before you turned off the player. Last Play automatically remembers the playback settings for up to 16 discs, including screen aspect ratio, selected languages, subtitles, and more.

Multiple Angle Viewing - Want to see what the view is like from a race car driver's seat? How about from a bird's-eye view? Maybe off from a distance? If your DVD movie is recorded from several different angles, Hitachi's DV-P250U can selectively access those views at your command.

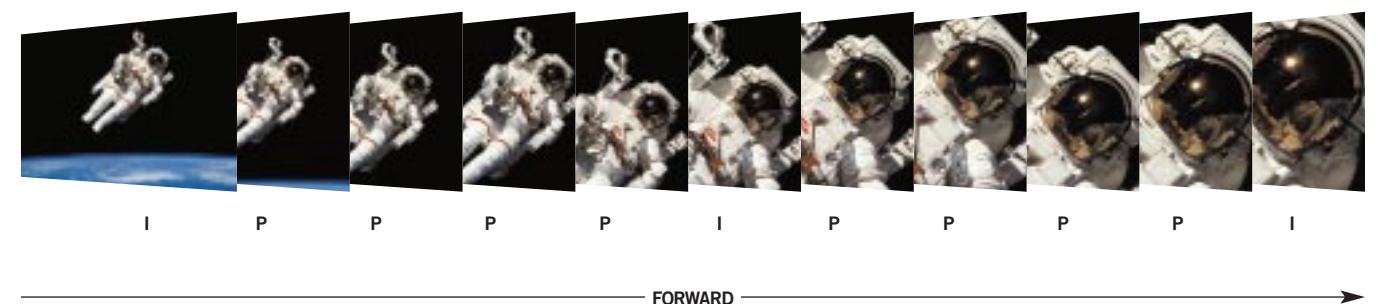


Digital Zoom Function - You can zoom in to get a closer look at an object by simply pressing the zoom button on the remote control and then choosing between two or four times the original size (DVD only). You can even select one of nine screen areas by pressing the corresponding number key on the remote control. On-screen horizontal and vertical bars indicate the location of the section being magnified.

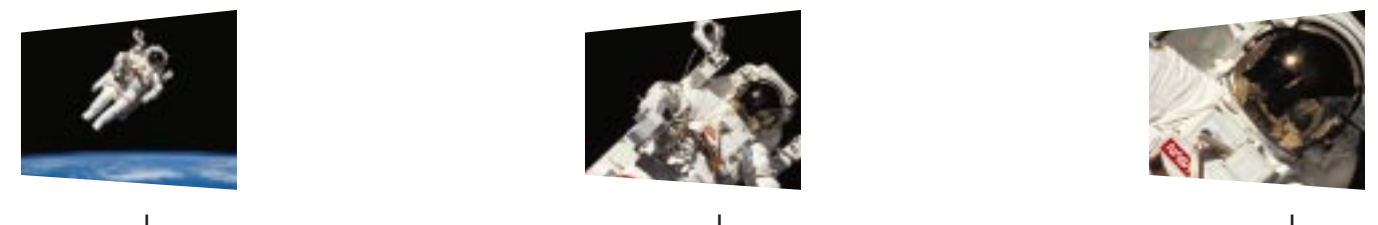
Still Picture with Frame Advance - This function allows you to pause during playback to view a clear still picture of the scene. You can progressively advance 1 frame at a time, or reverse 0.5 seconds each time, by simply pressing the STEP forward and reverse buttons.

Smooth Visual Search - Hitachi's IP Search uses a combination of Intra-frame pictures (I) and Predictive-coded pictures (P) to assure smooth search playback, providing more natural-looking video. See the graphic below for more information.

HITACHI'S ADVANCED IP SEARCH ILLUSTRATION



CONVENTIONAL I SEARCH



ULTRAVISION DIGITAL

FEATURES	
Digital Zoom Function	2x, 4x (DVD) w/ Graphical Position Indicator
Fast-Access Disc Navigation System	Yes
Jog / Shuttle Variable Speed Playback	Yes (On Deck)
Last Play Function	Yes
Multi-Language OSD	Yes (English, French, Spanish)
Multi-Language Subtitle Function	Yes (DVD Encoded)
Multi-Language Vocal Function	Yes (DVD Encoded)
Multiple Angle Viewing	Yes (DVD Encoded)
Multiple Playback Modes	Yes (Repeat, Random, Sequenced)
Screen Saver	Yes
Smooth Visual Search	Yes (Intra-Frame/Predictive-Coded Picture Search for 2x FF)
Still Picture w/ Frame Advance	Yes
GENERAL	
Drive Speed	2x DVD Drive
Playback Disc Types	DVD Video, Video & Audio CD, CD-R, CD-RW
Video Output Format	NTSC, PAL, PAL60
Mechanism	2 Laser / 2 Lens
Wavelength	650nm (DVD), 780nm (CD, VCD)
Power Supply	120 VAC, 60 Hz
Power Consumption	27 Watts
VIDEO	
Horizontal Resolution	≥ 500 Lines
Video D/A Converter	10 Bit
AUDIO	
CD Frequency Response	4-20 kHz (EIAJ)
DVD Frequency Response (48k Sampling)	4 Hz-22 kHz
DVD Frequency Response (96k Sampling)	4 Hz-44 kHz
Audio D/A Converter	24 Bit, 96 kHz
Dynamic Range	100 dB (DVD)
S/N Ratio	110 dB (DVD)
Virtual Surround (Spatializer N-2-2)	Yes
Wow & Flutter	Below 0.001% W. Peak (EIAJ)
Total Harmonic Distortion	0.003% (EIAJ Measurement)
DIGITAL	
Linear PCM	Yes
Dolby Digital Down-Mix 2 Channel	Yes
Dolby Digital 5.1 Ch.	Yes
DTS	Yes
CONNECTION	
Component Video Output	(Y, Pb, Pr) Phono Plugs
S-Video Video Output	(4-Pin) Mini DIN
Composite Video Output	(Video) Phono Plug
Dolby Digital 5.1 Audio Output	(L,R,C,SL,SR,Sub) Phono Plugs
Digital (Optical) Audio Output	(TOS-Link) Optical
Digital (Coaxial) Audio Output	(Coax) Digital
Analog (Mixed 2 Ch.) Audio Output	(L, R) Phono Plugs
Dimensions (W x H x D)	17-1/8 x 3-7/8 x 12-3/8 inches
Weight	8.6 Lbs.
ACCESSORIES	
Remote Control Unit	Included
2 AAA Batteries	Included
AV Cable	Included
Power Cord	Included
PACKAGE	
Dimensions (W x H x D)	20-1/5 x 7-1/2 x 16-1/8 inches
Weight	11.7 Lbs.

© 1999 Hitachi, Ltd.
 All specifications subject to change without notice.
 Contact Hitachi (1-800-HITACHI) for current dimensions and weight.
 UltraVision is a registered trademark of Hitachi Home Electronics (America).
 UltraVision Digital is a trademark of Hitachi Home Electronics (America).
 Dolby, Pro Logic, Dolby Digital and the double-D symbol are registered trademarks of Dolby Laboratories.
 DTS and DTS Digital Out are registered trademark of Digital Theater Systems, Inc.
 Certain audio features of this product manufactured under a license from Desper Products, Inc.
 Spatializer® 3-D Stereo, Spatializer N-2-2™ and the circle-in-square device are trademarks owned by Desper Products, Inc.



HITACHI